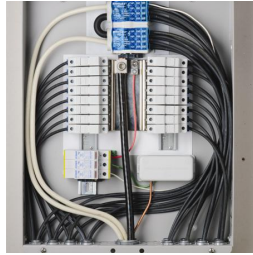
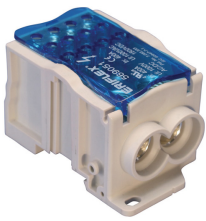
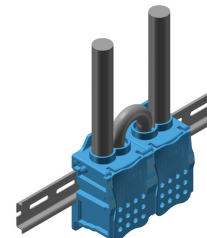
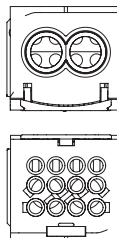
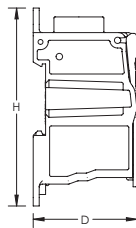
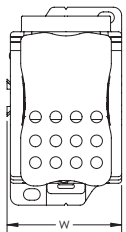


# UD-400A-212CU Single Pole Distribution Block – UD-400212CU (569051)



- Ideal for solar applications
- Increase the number of outputs with one input using a jumper
- Tinned copper block allows for copper or aluminum conductor connections
- Screw retaining cover is hinged and removable
- Design allows for visual inspection of conductor and confirmation of connection
- Easily clips onto DIN rail or mounts to panel with screws
- 95% fill ratio
- Halogen free
- RoHS compliant



Part Number	UD-400212CU
Article Number	569051
Material	Copper Thermoplastic
Finish	Tinned
Max Current Rating, IEC	400 A
Max Current Rating, UL/CSA	400 A
Short Term Withstand Current (Icw) 1s	24.5 kA
Peak Short Circuit Current (Ipk)	51 kA
Short Circuit Current Rating (SCCR)	10 kA
Max Working Voltage, IEC (Ui)	1,000 VAC 1,500 VDC
Max Working Voltage, UL (Vin)	1,000 VAC/DC
Line Side Number of Connections	2
Line Side Compact Stranded Wire Size	35 – 95 mm <sup>2</sup>
Line Side Wire Size	#8 – 3/0
Load Side Number of Connections	12
Load Side Compact Stranded Wire Size	(12) 2,5 - 10 mm <sup>2</sup>
Load Side Stranded Wire Size - Ferrule	(12) 2,5 - 10 mm <sup>2</sup>
Load Side Wire Size	(12) #14 - #6
Enclosure Rating	IP 20



<b>Part Number</b>	<b>UD-400212CU</b>
Depth (D)	50 mm
Height (H)	96 mm
Width (W)	55.73 mm
Unit Weight	0.38 kg
Certification Details	UL* 1059
Flammability Rating	UL* 94V-0
Complies With	IEC* 60947-7-1
Certifications	cURus EAC 0234267 (Russian Federation)
Standard Packaging Quantity	1 pc
UPC	78285668760
EAN-13	8711893096323

<b>Design Guideline for Distribution Blocks, Power Blocks and Power Terminals</b>										
Derating according to Ambient* Temperature (°C) to maintain working temperature of 85°C										
Ambient Temperature (°C)	30°	35°	40°	45°	50°	55°	60°	65°	70°	75°
Derating Coefficient (d)	1	1	1	0.94	0.88	0.82	0.75	0.67	0.58	0.47
*environment around the terminal blocks inside the enclosure										

IEC is a registered trademark of the International Electrotechnical Commission. UL, UR, cUL, cUR, cULus and cURus are registered certification marks of UL LLC.

**WARNING**

ERICO products shall be installed and used only as indicated in ERICO's product instruction sheets and training materials. Instruction sheets are available at [www.erico.com](http://www.erico.com) and from your ERICO customer service representative. Improper installation, misuse, misapplication or other failure to completely follow ERICO's instructions and warnings may cause product malfunction, property damage, serious bodily injury and death.

Copyright © 2015 ERICO International Corporation. All rights reserved.

CADDY, CADWELD, CRITEC, ERICO, ERIFLEX, ERITECH, and LENTON are registered trademarks of ERICO International Corporation.

